

Shenzhen Gisantone Technology Co.,Ltd

No.30th, West Road of Shibi, Liulian, Pingdi town, Longgang
District, Shenzhen, China. 518117

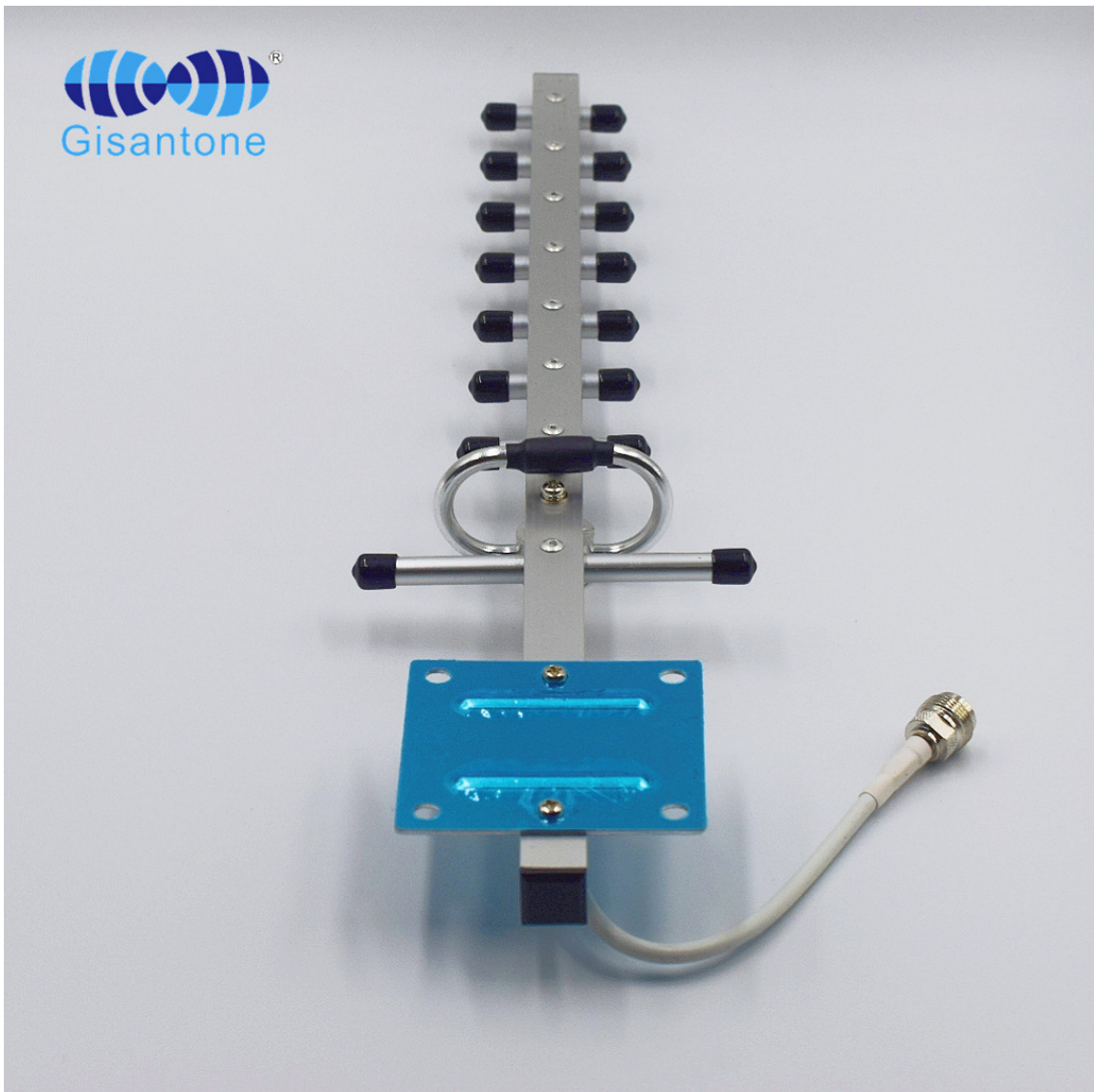
Tell : 0086 0755 89390978 Fax : 0086 0755 89390979



Product Name 1710-2170MHz 12DBI Directional Outdoor Yagi Antenna

Model No. G13213C

- ✓ Outdoor Directional Yagi Antenna
- ✓ Frequency band 1710-2170MHz
- ✓ Gain 12DBI
- ✓ Horizontal/Vertical Beam width 50/45 degree
- ✓ N female connector
- ✓ 30CM RG58/U cable



Shenzhen Gisantone Technology Co.,Ltd

No.30th, West Road of Shibi, Liulian, Pingdi town, Longgang
District, Shenzhen, China. 518117

Tell : 0086 0755 89390978 Fax : 0086 0755 89390979



Electrical Specifications	
Model No.	G13213C
Frequency Range	1710-2170MHz
Gain	12Dbi
VSWR	≤1.5
Input Impedance	50Ω
Polarization	Vertical & Horizontal
Front to Back Ratio	≥15dB
Horizontal Half Power Angle	50°
Vertical Half Power Angle	45°
Max Input Power	100W
Lightning Protection	DC Ground
Mechanical Specifications	
Connector Type	N-female
Cable Type	RG58/U
Cable Length	30CM
Working Temperature	-40°C ~ + 65°C
Antenna Weight	350g
Pole Diameter	Φ35~Φ55mm
Size	410*102*45mm
Rated Wind Velocity	210km/h
Radiating Element	9