

Shenzhen Gisantone Technology Co.,Ltd

No.30th, West Road of Shibi, Liulian, Pingdi town, Longgang

District, Shenzhen, China. 518117

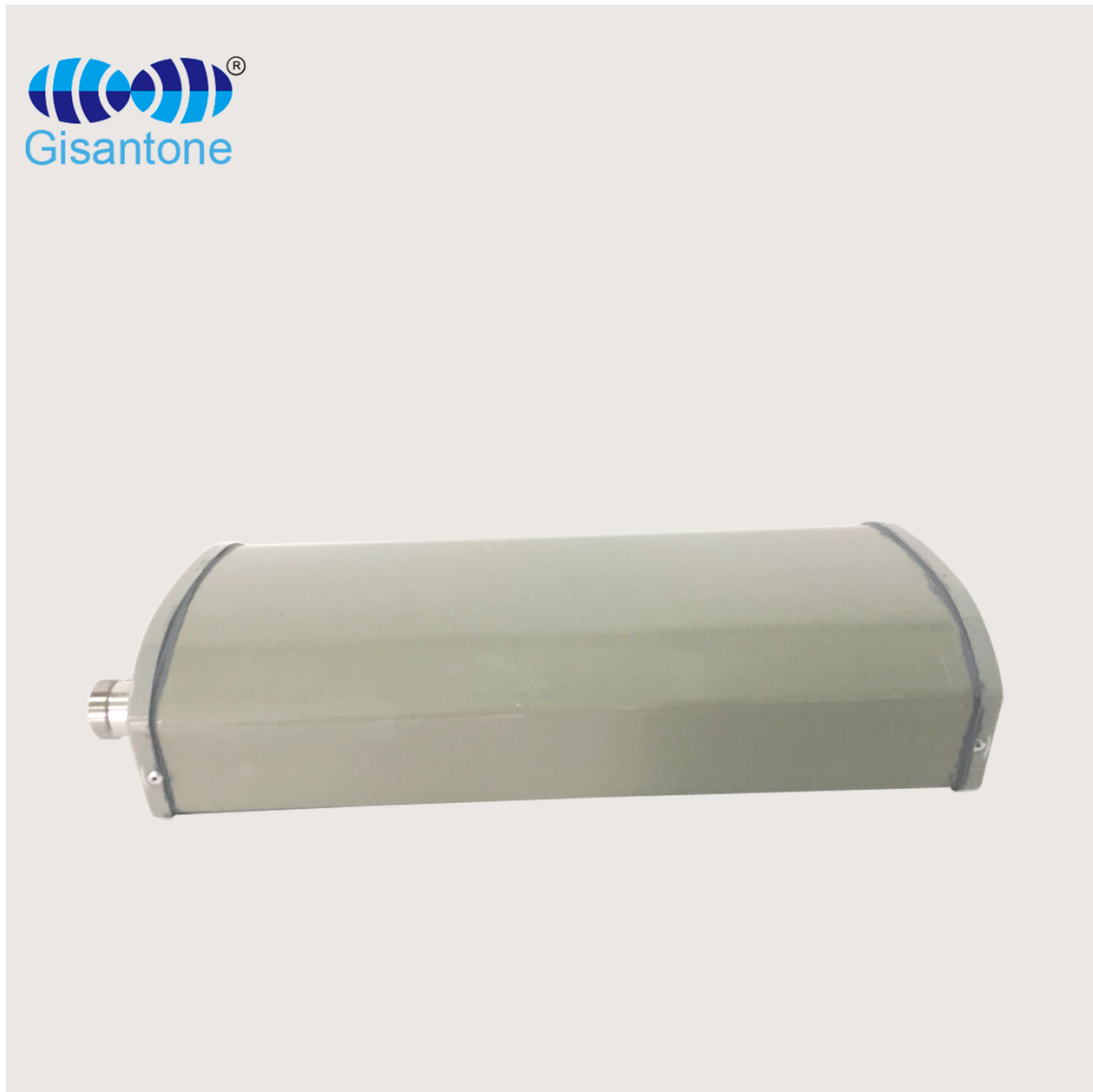
Tell : 0086 0755 89390978 Fax : 0086 0755 89390979



Product Name 1710/2700MHz MIMO Outdoor Panel Antenna

Model No. G15027A

- ✓ Outdoor 1710-2700MHz MIMO Panel Antenna
- ✓ Frequency band 1710-2700MHz
- ✓ Gain 11/12DBI * 2
- ✓ Horizontal/Vertical Beam width 65/32 degree
- ✓ 2 * 7/16DIN connector



Shenzhen Gisantone Technology Co.,Ltd

No.30th, West Road of Shibi, Liulian, Pingdi town, Longgang
District, Shenzhen, China. 518117

Tell : 0086 0755 89390978 Fax : 0086 0755 89390979



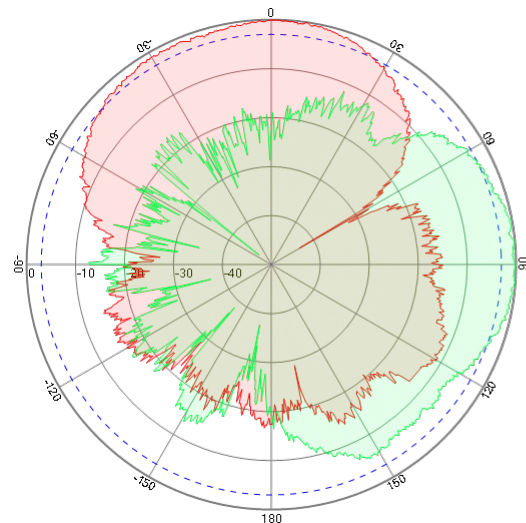
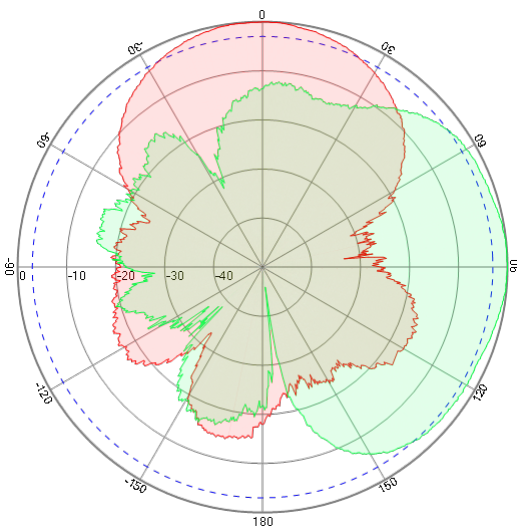
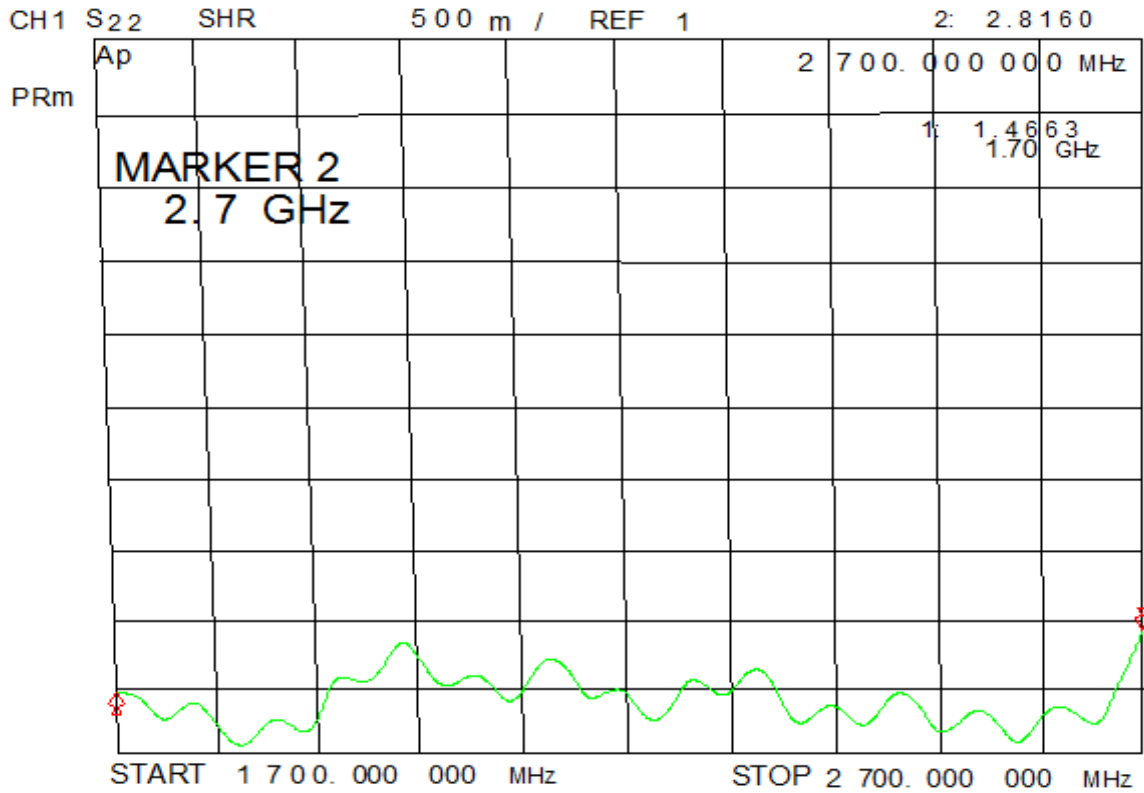
Electrical Specifications	
Model NO.	G15027A
Frequency Range	1710-2700MHz
Gain	2*11/12Dbi
VSWR	≤1.5
Input Impedance	50Ω
Polarization	±45°
PIMD 3TH	≤-97Dbm @2W*37dBm)
Front to Back Ratio	≥20dB
Isolation	≥25dB
Horizontal Half Power Angle	65°
Vertical Half Power Angle	32°
Max Input Power	150W
Lightning Protection	DC Ground
Mechanical Specifications	
Connector Type	2*7/16 DIN female
Working Temperature	-40°C~ + 65°C
Antenna Weight	0.9kg
Size	260x165x85mm
Pole Diameter	Φ40~Φ55mm
Rated Wind Velocity	210 km/h
Antenna Cover Material	PVC (3.5mm)
Color	Grey
Package Size	42*20*12CM / 1pcs
Weight	2KG

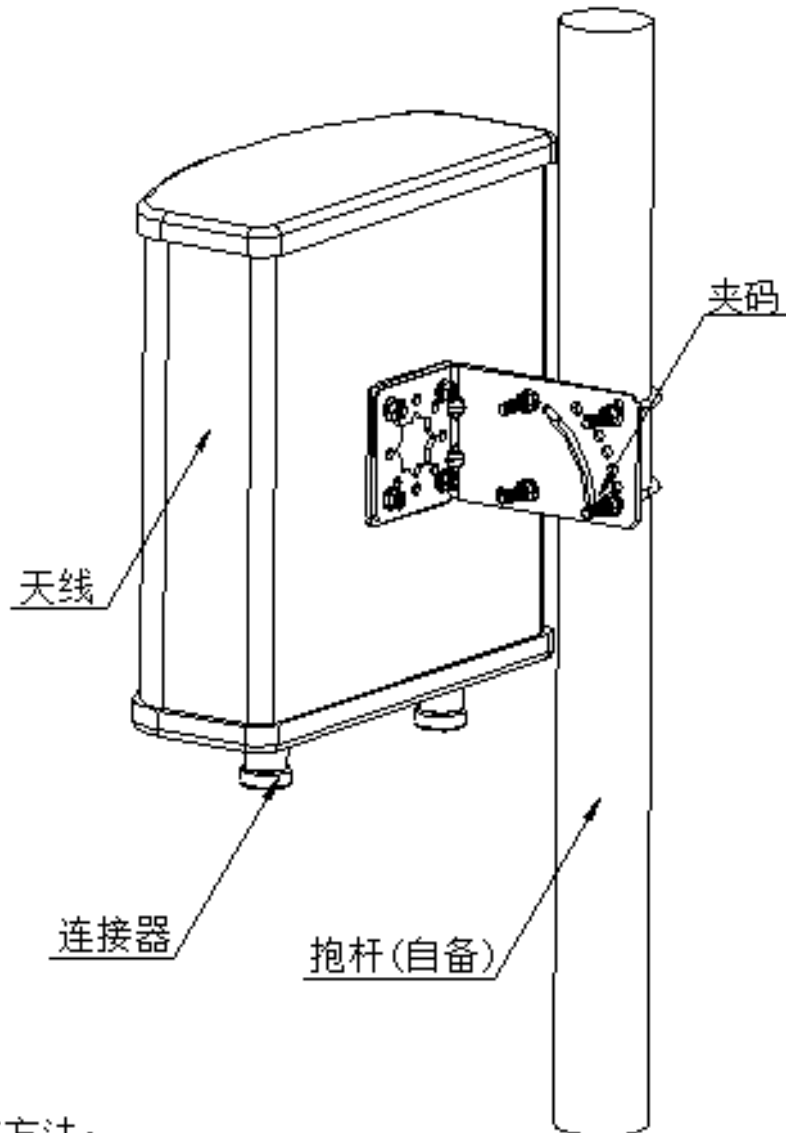
Specifications may change without notice. Contact us by sales@gisantone.com for any inquiries.

Shenzhen Gisantone Technology Co.,Ltd

No.30th, West Road of Shibi, Liulian, Pingdi town, Longgang District, Shenzhen, China. 518117

Tell : 0086 0755 89390978 Fax : 0086 0755 89390979





安装方法:

1. 首先用螺钉将L型夹码固定到天线上.
2. 再把U型夹码套到抱杆上与N型夹码配合, 将天线固定在抱杆上, 抱杆直径为($\phi 35$ - $\phi 50$ mm).
3. 再将馈线与天线连接器连接; 并做好防水处理. 找到天线接收信号最佳方位, 紧固螺母;